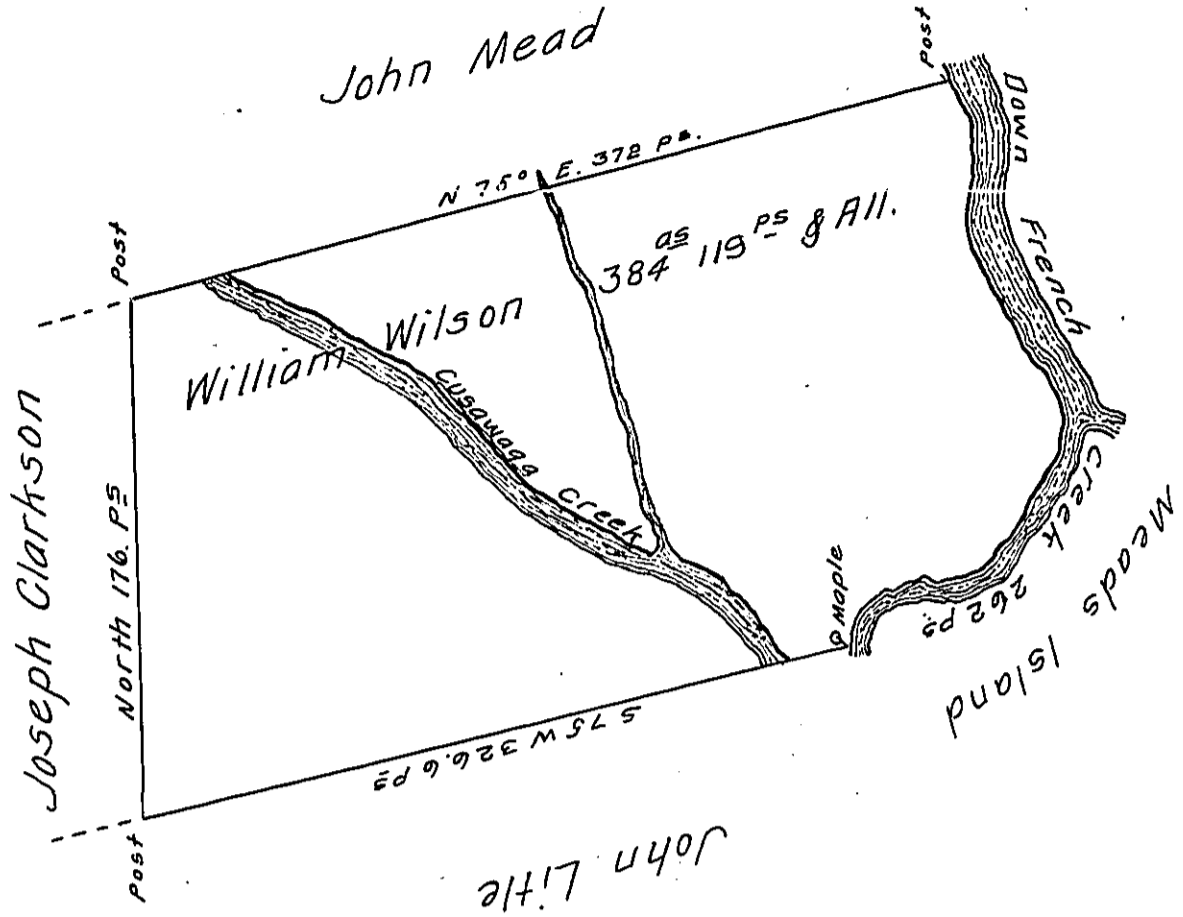


River Courses

- S 21° E 24
- S 21° W 20
- S 24° E 69
- S 59° E 16
- S 32° W 34
- S 19° W 8
- S 47° W 25
- N 76° W 27
- S 50° W 30
- S 9° E 9
- 262 P^s



Situate on the West Side of and adjoining French Creek in
 ALLY County. Containing 384 Acres and 119 P^s and All^{ce}
 of six p^t Cent for Roads &c. Surveyed the 4th Day of May 1794
 In pursuance of his Improvement Dated the 3^d Day of
 April 1792.

To Dan^l Brodhead Esq^r } W^m Power D. S. r
 Surveyor General

IN TESTIMONY that the above is a copy of the original remaining on file in
 the Department of Internal Affairs of Pennsylvania, made
 conformably to an Act of Assembly approved the 16th day of
 February, 1833, I have hereunto set my Hand and caused
 the Seal of said Department to be affixed at Harrisburg,
 this twenty fourth day of January 1911.

Henry Houchens

Secretary of Internal Affairs.